

*Johnson
&
Hoffman*



www.plugbuttons.com



Manufacturer of Precision Metal Stampings & Deep Drawn Components

Johnson & Hoffman Fasteners



Over 90 Years of Service

These products trace their origins to 1912, when Fred S. Carr founded the Carr Fastener Company in Cambridge, Mass. A carriage maker by trade, he developed a concept for making fasteners that attached canvas to his carriages. Known as "Dot" fasteners, these early components were widely used for both horse drawn and horseless carriages.

In 1929, the Carr Fastener Company merged with a competitor to become United-Carr and shortly thereafter the success of United-Carr was assured when the company developed a tee nut for Fisher Body. This simple component enabled sheet metal to be effectively fastened to the newly fabricated metal frames that were beginning to replace wood throughout the automotive industry.

Today, Johnson & Hoffman carries on the tradition of creative engineering solutions that has always been the hallmark of the company.



Johnson & Hoffman Plug Buttons



Johnson & Hoffman plug buttons are an easy solution to such design problems as closing unavoidable holes, providing air vents, attaching gliding feet for metal furniture or simply adding a spot accent of color. These fasteners come in many designs and finishes, suitable for use with metal and plastic products

Plug buttons are designed so that they may be quickly and easily snapped into place by hand. Expanding spring action of their prongs holds the fastener securely. These fasteners can be easily removed when providing temporary closure. Johnson & Hoffman produces plug buttons to fit holes from 1/8" to 3" in diameter.

Parts are available in wide range of models and designs and can be purchased in brass, CRS1008/1010 and CRS1050.

www.plugbuttons.com

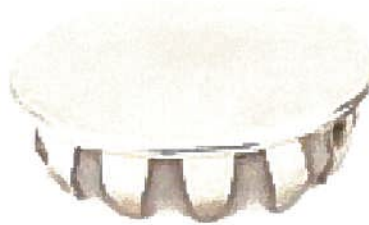
JOHNSON & HOFFMAN

a JADE Corporation



Manufacturer of Precision Metal Stampings & Deep Drawn Components

Johnson & Hoffman Plug Buttons



Standard Plugs with Hole Diameters 3/16 to 25/64 (4.8-9.9mm)													
Hole Dia.		Panel Thickness				Cap Dia.		Cap Height		Prong Length		Number Of Prongs	J&H Root Part Number
		Min	Max			In	mm	In	mm	In	mm		
In	mm	In	mm	In	mm	In	mm	In	mm	In	mm		
3/16	4.8	.037	1.0	.062	1.6	11/32	8.7	1/16	1.6	9/64	3.6	6	48179
7/32	5.6	.037	0.9	.078	2.0	11/32	8.7	5/64	2.0	5/32	4.0	6	50711
1/4	6.4	.032	6.8	.078	2.0	13/32	10.3	5/64	2.0	11/64	4.4	6	51617
1/4	6.4	.035	0.9	.062	1.6	13/32	10.3	1/16	1.6	11/64	4.4	6	48151
9/32	7.1	.032	0.8	.078	2.0	13/32	10.3	1/16	1.6	13/64	5.2	6	51071
5/16	7.9	.037	0.9	.062	1.6	7/16	11.1	1/16	1.6	3/16	4.8	6	51034
11/32	8.7	.093	2.4	.125	3.2	17/32	13.5	5/64	2.0	19/64	7.5	6	48149
3/8	9.5	.015	0.4	.039	1.0	35/64	13.9	5/64	2.0	9/64	3.6	6	51077
3/8	9.5	.037	0.9	.078	2.0	1/2	12.7	1/16	1.6	11/64	4.4	6	48192
3/8	9.5	.093	2.4	.171	4.3	17/32	13.5	5/64	2.0	19/64	7.5	6	48154
25/64	9.9	.078	2.0	.093	2.4	1/2	12.7	1/16	1.6	3/16	4.8	6	51003

Material Prefix	
BS	Brass CDA260
HS	CRS1050
SS	CRS1008/1010
NS	Stainless Steel
XS	CRS1008/1010 - Assembled
XH	CRS1050 - Assembled
XX	CRS1008/1010 & CRS1050 Assembled

JOHNSON & HOFFMAN

a JADE Corporation



Manufacturer of Precision Metal Stampings & Deep Drawn Components



Standard Plugs with Hole Diameters 13/32 to 1-1/8 (10.3-28.6mm)

Hole Dia.	Panel Thickness				Cap Dia.		Cap Height		Prong Length		Number Of Prongs	J&H Root Part Number	
	In	mm	Min In	Max mm	In	mm	In	mm	In	mm			
13/32	10.3	.062	1.6	.078	2.0	1/2	12.7	1/16	1.6	3/16	4.8	6	48182
7/16	11.1	.037	0.9	.047	1.2	21/32	16.7	5/64	2.0	5/32	4.0	8	51043
15/32	11.9	.083	2.1	.125	3.2	5/8	15.9	1/16	1.6	19/64	7.5	8	51051
1/2	12.7	.037	0.9	.062	1.6	21/32	16.7	5/64	2.0	3/16	4.8	8	48152
1/2	12.7	.125	3.2	.156	4.0	5/8	15.9	1/16	1.6	21/64	8.3	6	51338
17/32	13.5	.031	0.8	.062	1.6	21/32	16.7	5/64	2.0	3/16	4.8	8	51074
9/16	14.3	.047	1.2	.078	2.0	23/32	18.3	1/16	1.6	7/32	5.6	8	51156
5/8	15.9	.062	1.6	.078	2.0	51/64	20.2	5/64	2.0	13/64	5.2	8	48172
5/8	15.9	.062	1.6	.109	2.8	51/64	20.2	5/64	2.0	7/32	5.6	8	51142
11/16	17.5	.037	0.9	.062	1.6	7/8	22.2	5/64	2.0	3/16	4.8	12	50727
3/4	19.1	.037	0.9	.093	2.4	15/16	23.8	3/32	2.4	13/64	5.2	12	51026
3/4	19.1	.078	2.0	.109	2.8	15/16	23.8	3/32	2.4	17/64	6.8	12	48165
25/32	19.8	.125	3.2	.188	4.8	15/16	23.8	3/32	2.4	19/64	7.5	12	51334
13/16	20.6	.047	1.2	.078	2.0	1 1/16	27.0	1/16	1.6	3/16	4.8	12	51045
7/8	22.2	.031	0.8	.093	2.4	1 1/16	27.0	1/16	1.6	15/64	6.0	12	48155
7/8	22.2	.094	2.4	.171	4.3	1 1/16	27.0	5/64	2.0	19/64	7.5	12	50685
29/32	23.0	.031	0.8	.062	1.6	1	25.4	1/8	3.2	1/4	6.4	12	48189
15/16	23.8	.037	0.9	.094	2.4	1 5/32	29.4	1/16	1.6	7/32	5.6	12	51351
1.0	25.0	.062	1.6	.093	2.4	1 5/32	29.4	5/64	2.0	7/32	5.6	12	48143
1.0	25.4	.093	2.4	.125	3.2	1 5/32	29.4	5/64	2.0	7/32	5.6	12	48166
1 1/16	27.0	.062	1.6	.093	2.4	1 5/16	33.3	3/32	2.4	13/64	5.2	12	51149
1 1/8	28.6	.037	0.9	.078	2.0	1 5/16	33.3	3/32	2.4	1/4	6.4	12	48174

Material Prefix

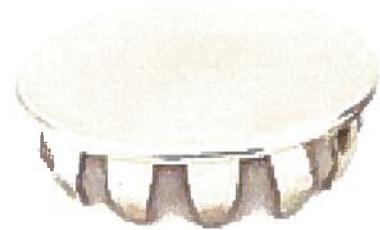
BS	Brass CDA260
HS	CRS1050
SS	CRS1008/1010
NS	Stainless Steel
XS	CRS1008/1010 - Assembled
XH	CRS1050 - Assembled
XX	CRS1008/1010 & CRS1050 Assembled

JOHNSON & HOFFMAN

a JADE Corporation



Manufacturer of Precision Metal Stampings & Deep Drawn Components



Standard Plugs with Hole Diameters 1-1/4 to 3 (31.8-76.2mm)

Hole Dia.		Panel Thickness				Cap Dia.		Cap Height Prong Length				Number Of Prongs	J&H Root Part Number
		Min		Max		In	mm	In	mm	In	mm		
In	mm	In	mm	In	mm	In	mm	In	mm	In	mm		
1 1/4	31.8	.062	1.6	.093	2.4	1 7/16	36.5	3/32	2.4	7/32	5.6	12	50726
1 3/8	34.9	.037	0.9	.078	2.0	1 9/16	39.7	3/32	2.4	5/16	7.9	12	51058
1 3/8	35.0	.109	2.8	.141	3.6	1 9/16	39.7	3/32	2.4	5/16	7.9	12	48132
1 1/2	38.1	.038	1.0	.141	3.6	1 41/64	41.7	3/32	2.4	21/64	8.3	12	50834
1 5/8	41.2	.062	1.6	.078	2.0	1 51/64	45.6	1/8	3.2	7/32	5.6	12	50841
1 3/4	44.5	.037	0.9	.094	2.4	1 15/16	49.2	1/8	3.2	7/32	5.6	12	50890
2	50.8	.037	0.9	.187	4.8	2 5/16	58.7	5/32	4.0	3/8	9.5	14	XS48175*
2 3/32	53.2	.046	1.2	.062	1.6	2 9/16	65.1	7/32	5.6	9/32	7.1	14	XS51171*
2 1/4	57.2	.037	0.9	.078	2.0	2 9/16	65.1	7/32	5.6	9/32	7.1	14	XS51056*
2 1/2	63.5	.037	0.9	.062	1.6	2 13/16	71.4	3/32	2.4	1/4	6.4	16	XS51111*
3	76.2	.093	2.4	.156	4.0	3 5/16	84.1	15/64	6.0	13/32	10.3	12	XS48197*

*XS Denotes Assembled Part

Material Prefix

BS	Brass CDA260
HS	CRS1050
SS	CRS1008/1010
NS	Stainless Steel
XS	CRS1008/1010 - Assembled
XH	CRS1050 - Assembled
XX	CRS1008/1010 & CRS1050 Assembled



Manufacturer of Precision Metal Stampings & Deep Drawn Components

Johnson & Hoffman Specialty Plug Buttons



Specialty Plugs - Tube Closures												
Tubing Size				Cap Dia.		Cap Height		Prong Length		J&H Part		
Inside Dia. In/mm		Outside Dia. In/mm		In	mm	In	mm	In	mm			
.750	.812	19.1	20.6	7/8	22.2	7/8	22.2	7/64	2.8	9/16	14.3	HS51247
.875	.925	22.2	23.5	1	25.5	1	25.4	5/32	4.0	33/64	13.1	HS51248
1.092	1.150	27.7	29.2	1 1/4	31.8	1 15/64	31.4	17/64	6.8	35/64	13.9	HS51328



Specialty Plugs - Screen/Ventilator	
Hole Dia. In	J&H Part Number
1"	XS99522
1 5/8	XS51162



Manufacturer of Precision Metal Stampings & Deep Drawn Components

Johnson & Hoffman Hammer Style Capped Ratchet Plates



Hammer Style Capped Ratchet Plates							
Application Stud Dia.		Dia.		Height		Retention in Lbs	J&H Part Number
In	mm	In	mm	In	mm		
1/4	6.4	5/8	15.9	5/16	7.9	900	XX49833
5/16	7.9	5/8	15.9	5/16	7.9	900	XX49834
3/8	9.5	7/8	22.2	25/64	9.9	1000	XX49835
7/16	11.1	7/8	22.2	25/64	9.9	1200	XX49836
1/2	12.7	7/8	22.2	25/64	9.9	1200	XX49837



Manufacturer of Precision Metal Stampings & Deep Drawn Components

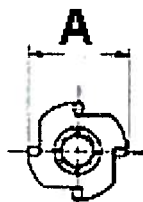
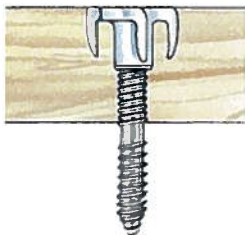
Johnson & Hoffman Straight Prong T- Nut Fasteners



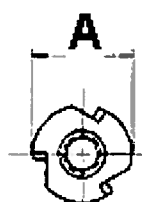
Straight Prong/Round Base T-Nuts (3 or 4 Prong)

Thread Size									Type		Part Number	
	In	mm	In	mm		In	mm	In	mm			
8 32	1/2	12.7	1/4	6.4	.213/.208	9/64	3.6	3 Prong	.035	0.9	SS58191	
10 24	1/2	12.7	3/16	4.8	.232/.227	9/64	3.6	3 Prong	.035	0.9	SS58420	
10 32	3/4	19.1	9/32	7.1	.232/.227	13/64	5.2	3 Prong	.035	0.9	SS58077	
1/4 20	3/4	19.1	5/16	7.9	.311/.306	13/64	5.2	4 Prong	.050	1.3	SS58685	

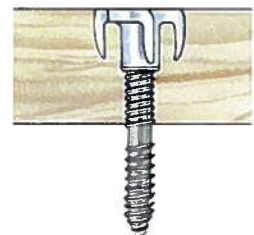
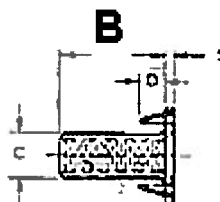
Material CRS1008/1010



4 Prong



3 Prong





Manufacturer of Precision Metal Stampings & Deep Drawn Components

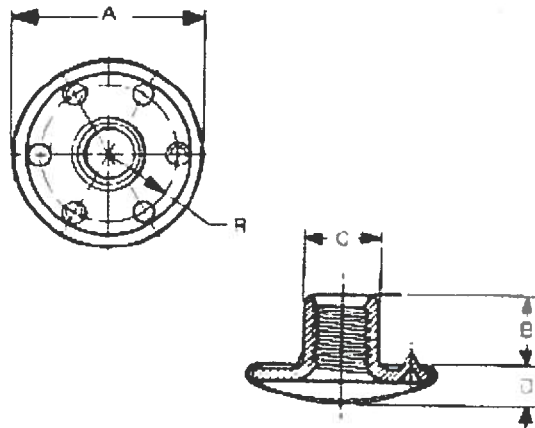
Johnson & Hoffman Capped T- Nut Fasteners



Capped/Round Base T-Nuts (with and without wood nibs)

Thread Size									Stock Thickness		Part Number
	In	mm	In	mm	In	mm	Type	In	mm		
1/4 20	1/2	12.7	15/64	6.0	.311/.306	3/32	2.4	w/o nibs	.050	1.3	XS58845*
1/4 20	47/64	18.7	5/16	7.9	.311/.306	5/32	4.0	w/o nibs	.050	1.3	XS48491*
10 32	51/64	20.2	17/64	6.8	.232/.227	11/64	4.4	3 wood nibs	.035	0.9	XS58016*
1/4 20	51/64	20.2	19/64	7.5	.311/.306	5/32	4.0	3 wood nibs	.050	1.3	XS58178*

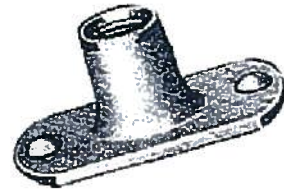
Material CRS1008/1010
*XS Denotes Assembled Part





Manufacturer of Precision Metal Stampings & Deep Drawn Components

Johnson & Hoffman Spot Welded, Projection Welded and Snap-In T- Nut Fasteners



Spot Welded, Projected Welded and Snap-In T-Nuts		
Thread Size	T-Nut Type	J&H Part Number
1/4 20	Spot Weld	SS58002
1/4 20	Spot Weld	SS58048
1/4 20	Spot Weld	SS58554
10 32	Projection	SS58274
5/16 18	Snap-In	HS59281

Material Prefix	
BS	Brass CDA260
HS	CRS1050
SS	CRS1008/1010
NS	Stainless Steel
XS	CRS1008/1010 - Assembled
XH	CRS1050 - Assembled
XX	CRS1008/1010 & CRS1050 Assembled



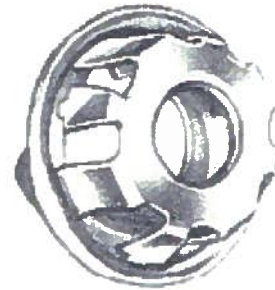
JOHNSON & HOFFMAN

a JADE Corporation



Manufacturer of Precision Metal Stampings & Deep Drawn Components

Johnson & Hoffman 5/16" & 3/8" Flexible Conduit Connectors



Johnson & Hoffman Part #

Conduit Diameter

XH53357 K9399	5/16"
XH53069 K9399	3/8"

Johnson & Hoffman conduit connectors are an inexpensive means to quickly connect flexible metal conduit to junction boxes or motor control panels. Our connector requires no tools or fasteners to assemble and replaces more expensive multiple component connectors.

Advantages

- No nuts to tighten – No tools required
- Simply threads on to metal conduit by hand
- Anti-rotation device retards removal of cable once in place

Applications

- Fluorescent Light Fixtures
- Incandescent light Cans
- Control Panels
- Junction Boxes



U.S. Patent 3814467. Other patents pending
UL Listed

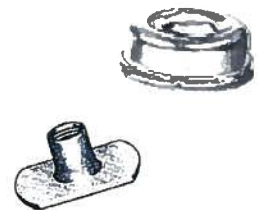
JOHNSON & HOFFMAN

a JADE Corporation



Manufacturer of Precision Metal Stampings & Deep Drawn Components

Johnson & Hoffman Commercial Industrial Finish Codes



Finish Code	Description
K0100	Clean Only (all materials)
K1110	Bright Nickel Plate
K1210	Racked Nickel Plate
K1611	Chrome over Bright Nickel Plate
K1711	Chrome over Racked Nickel Plate
K1821	Chrome over Racked Nickel & Buffed
K2915	Zinc Plate
K3220	Zinc Plate & Yellow Chromate Dip
K3320	Zinc Plate & Black Chromate Dip
K4500	Heavy Zinc Phosphate Coating
K4700	Heavy Zinc Phosphate & Rust Veto Oil
K4800	Black Oxide & Oil
K5900	Cleaned & Oiled (all materials)
K6140	Zinc Plating & Clear Chromate Dip
K9399	Mechanical Zinc Plate - Peen





Johnson & Hoffman

40 Voice Road

Carle Place, NY 11514

516-742-3333

www.johnsonhoffman.com

www.plugbuttons.com